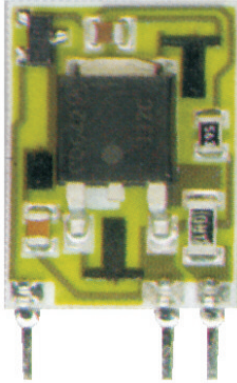


IRT1

Infrared Pulse Transmitter



General description

The IRT1 is a hybrid circuit that allows to realize an infrared barrier when utilized with an infrared pulse detector (IRD1).

It shows stable electric characteristics thanks to the "Thick film hybrid" technology.

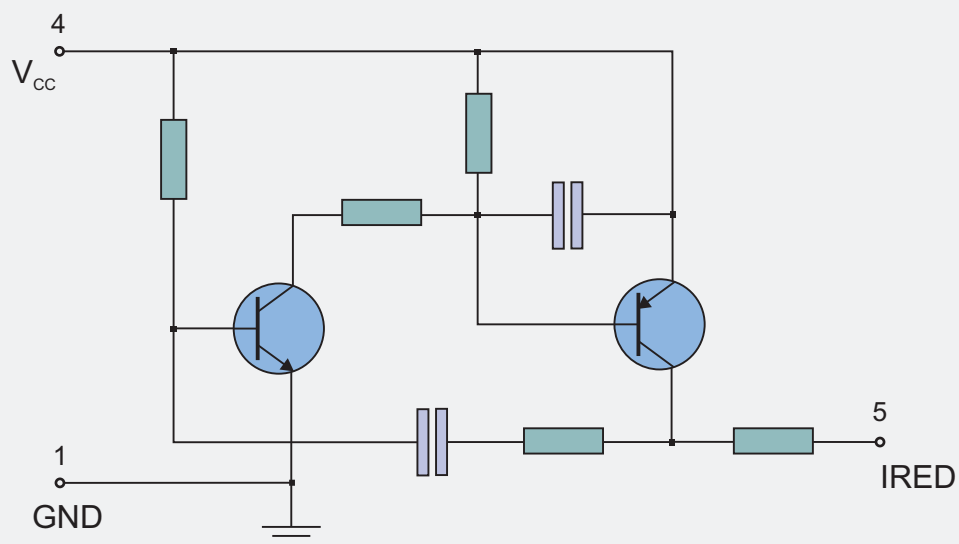
Features

- High RFI Immunity
- SIL Package

Applications

- Residential and commercial security systems
- Automatic doors opening systems

BLOCK DIAGRAM



Electrical Characteristics

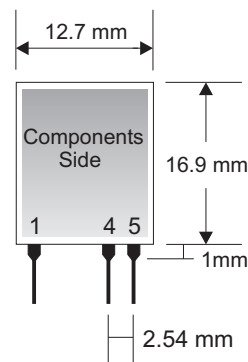
Ta = 25°C unless otherwise specified

CHARACTERISTICS		MIN	TYP	MAX	UNIT
V _{CC}	Supply Voltage	9	12	16	VDC
I _S	Supply Current		35		mA
F _{IR}	Infrared Pulse Frequency	300	400		Hz
T _p	Pulse Width		40		µsec
T _{OP}	Operating Temperature Range	-20		+80	°C

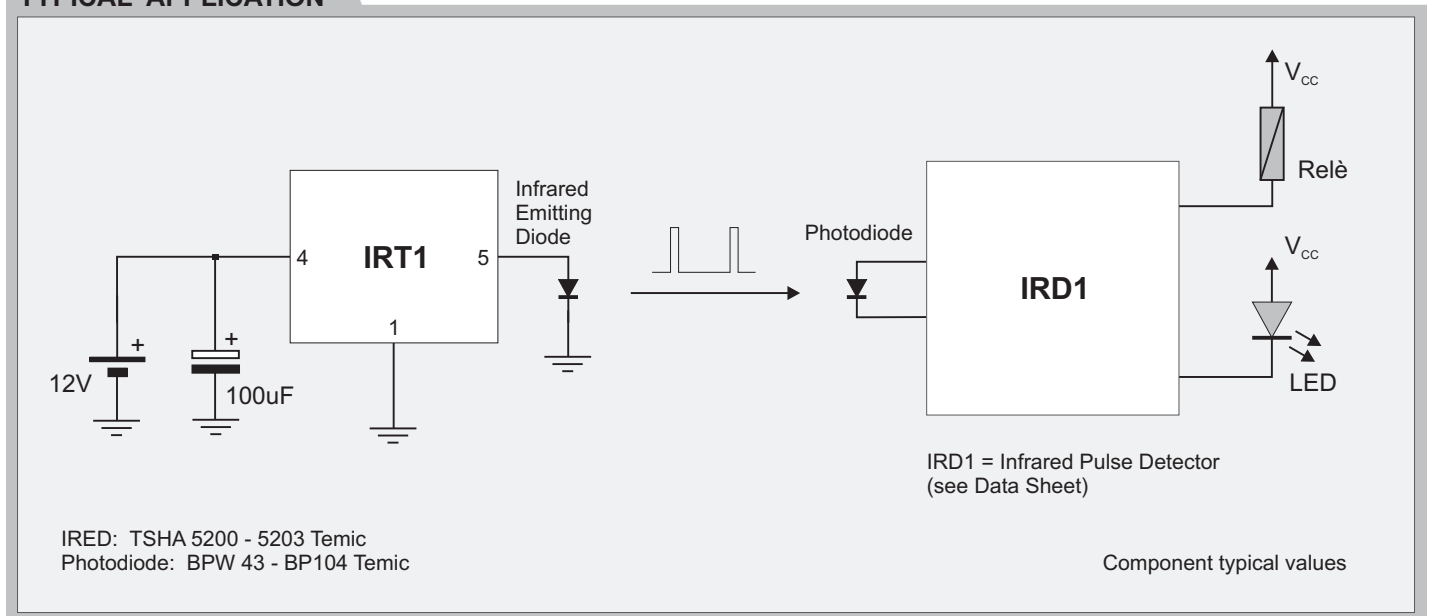
Pin Description

1	GND	Ground
4	Vcc	Supply Voltage
5	IRED	Infrared Emitting Diode

Mechanical Dimensions



TYPICAL APPLICATION



Web Site: www.telecontrolli.com

HEAD OFFICE & PLANT

Via Nazionale delle Puglie, 177
80026 CASORIA (NA), Italy
Tel: +39 081 7599033
Fax: +39 081 7596494

SALES OFFICE

sales @ telecontrolli.com